

Series Z Modular

CENTRALIZED CARD ISSUANCE SYSTEMS



INSTALL GUIDE

Revision 2.04



Important: the technical information contained in this manual is property of MATICA System S.r.l. and is secured by copyright. The terms of the license define and specify permitted uses and other limitations.

Reproduction of any part of this manual, in any form, is forbidden without the explicit written permission of MATICA System S.r.l.

Technical information contained in the present manual is subject to change without notice. If not otherwise specified, any reference to companies, names, dates and addresses is purely incidental and is only intended to illustrate the use of the MATICA System S.r.l. product.

Every care has been taken in the collection and verification of the documentation inserted in this manual; nevertheless MATICA System S.r.l. cannot assume any responsibility deriving from its use.

Copyright © 2008 **MATICA System S.r.l.**
All rights reserved
Published by **MATICA System S.r.l.**

Printed in Italy
Issue: January 2008
Revision 2.04

MATICA System S.r.l.
via Guido Rossa, 4/6
20037 – Paderno Dugnano
MILAN - ITALY
Phone +39.02.92272501
Fax +39.02.91084372

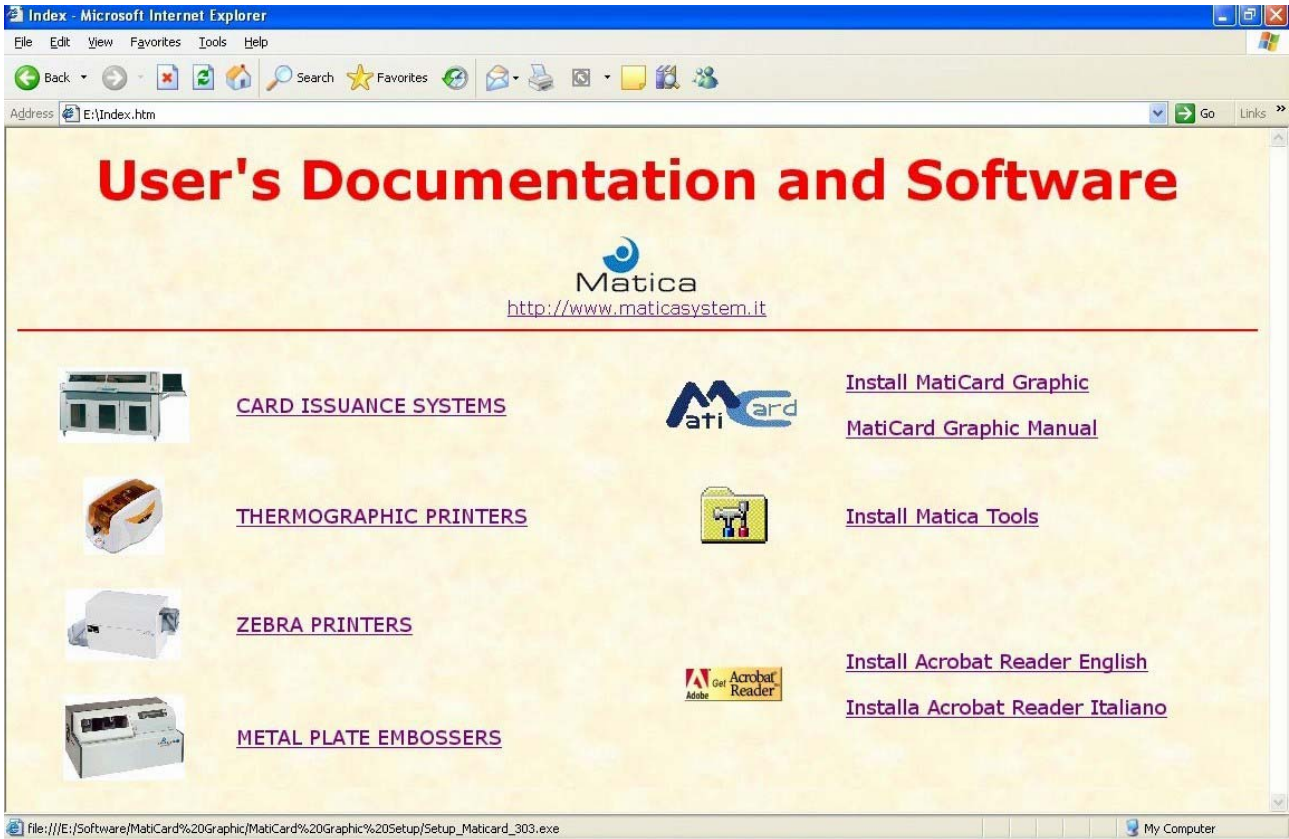
E-mail: techsupport@maticacs.com
Web: <http://www.maticacs.com>

Table of contents

Paragraph 1 – MatiCard installation	4
Paragraph 2 – MatiCard configuration for Z Modular	7
Paragraph 3 – ZT10 and Z20T installation	9
Paragraph 4 – MatiCard configuration for ZT10 - Z20T	12
Paragraph 5 – ZT20 installation	19
Paragraph 6 – MatiCard configuration for ZT20	22

Paragraph 1 – MatiCard installation

Before installing Z Modular Systems you must install the MatiCard software. Go to the Matica User CD start page and click **Install MatiCard Graphic**.

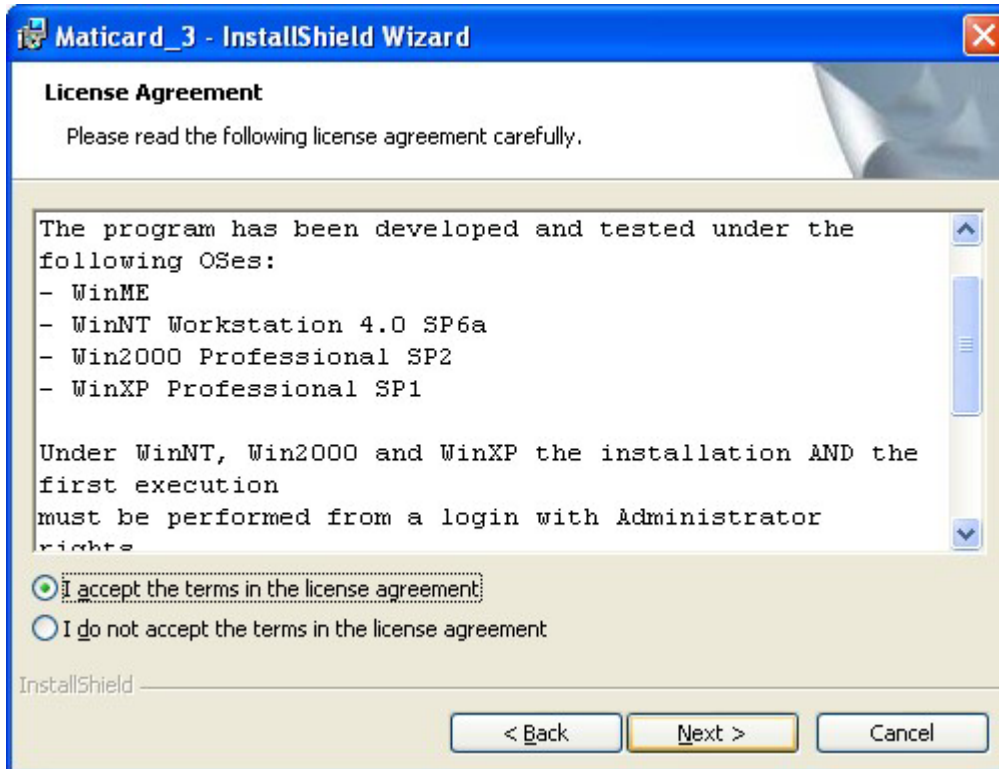


In the MatiCard InstallShield Wizard window, click **Next**.

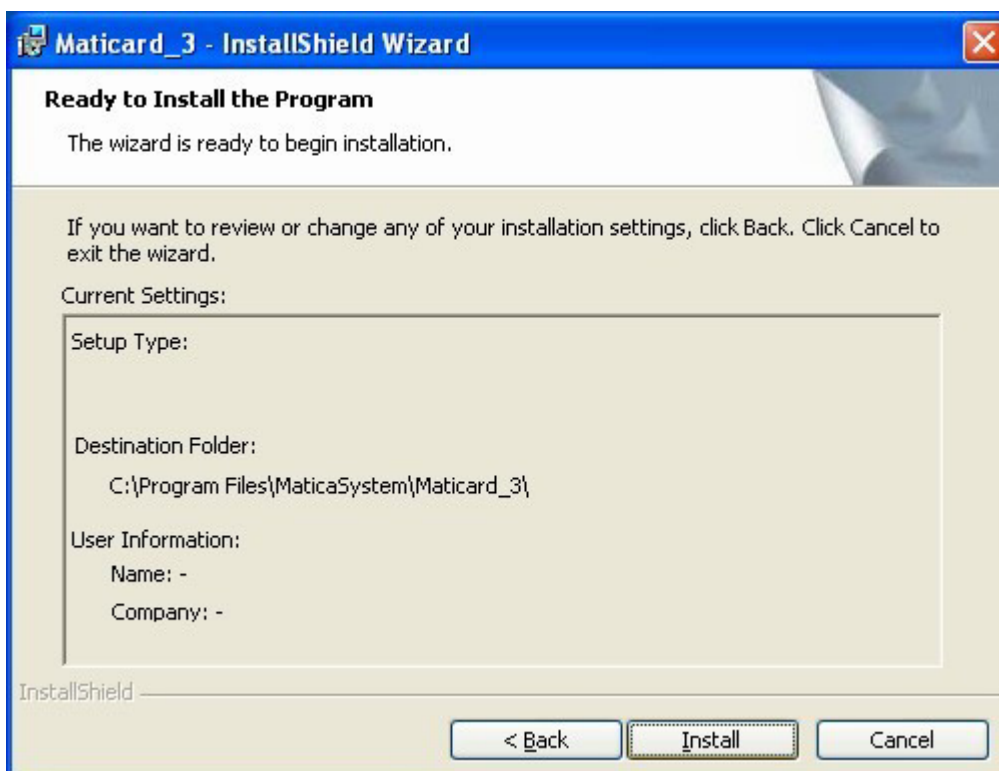


In the following wizard windows confirm the installation, accept the license terms and choose the installation folder, always clicking **Next**.

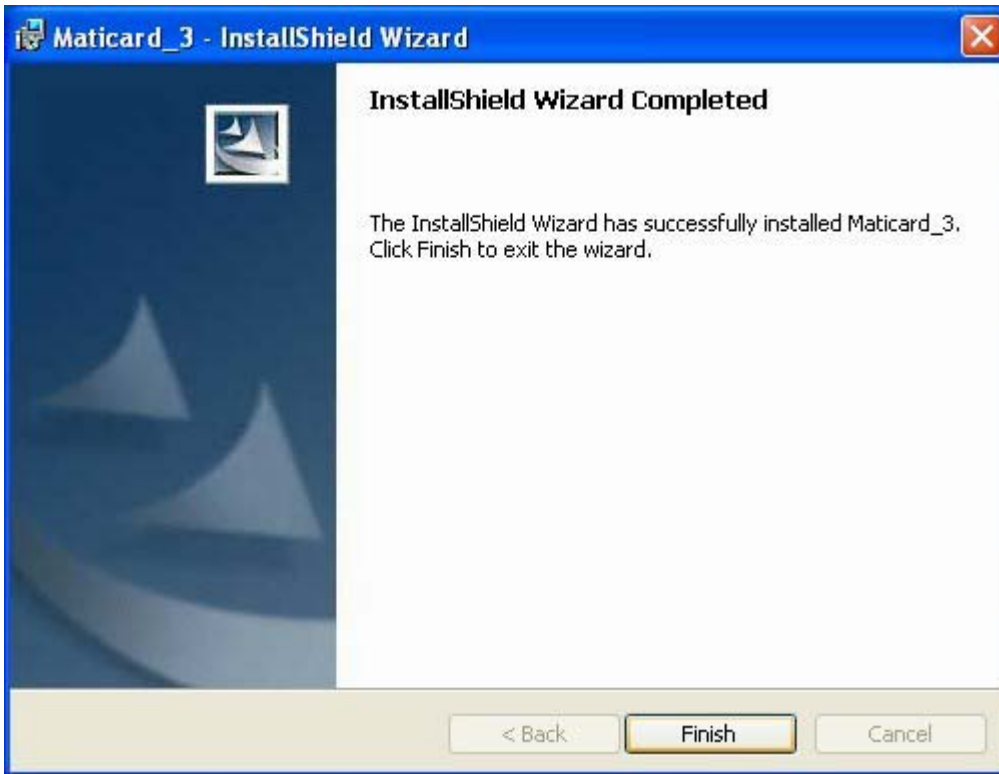
Note: in the license terms window are specified the operative systems required by the MatiCard software.



In the following wizard window click **Install** to start the installation.



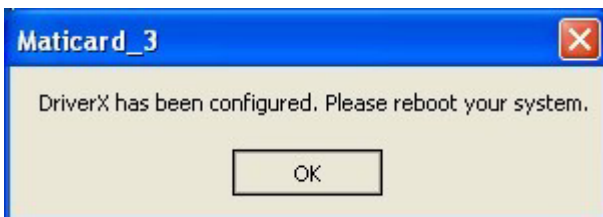
When the Pc has completed the installation, click **Finish**.



On the PC desktop, double click the MatiCard icon.



In the MatiCard reboot warning window, click **OK**.



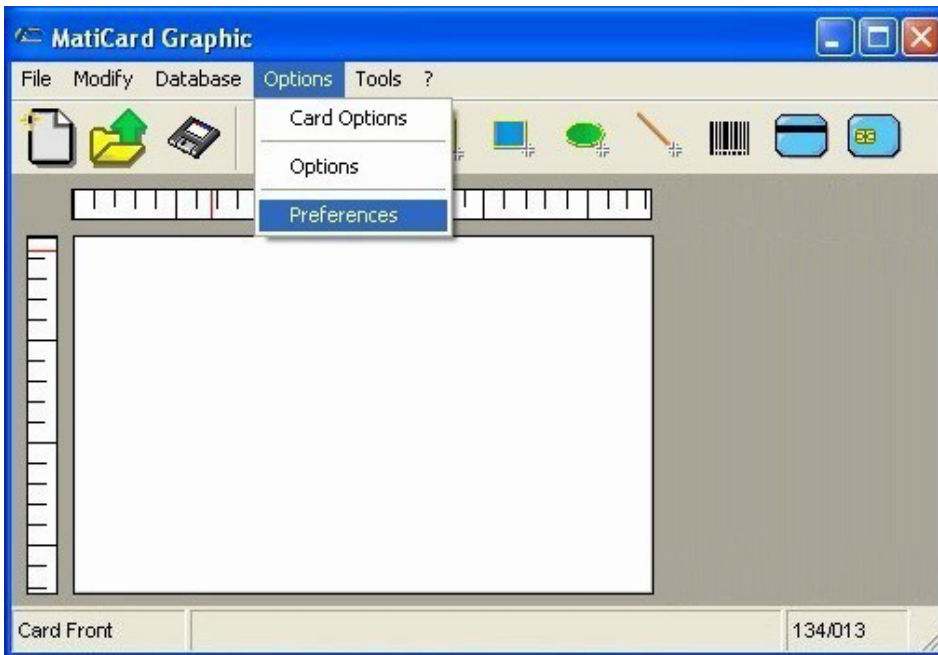
Restart the PC.

Paragraph 2 – MatiCard configuration for Z Modular

The installation for Z9 Plus, Z10, Z20 and Z30 is the same: connect the serial cable and the power supply, then switch on the system; the difference concerns the MatiCard configuration of the modules for each system.

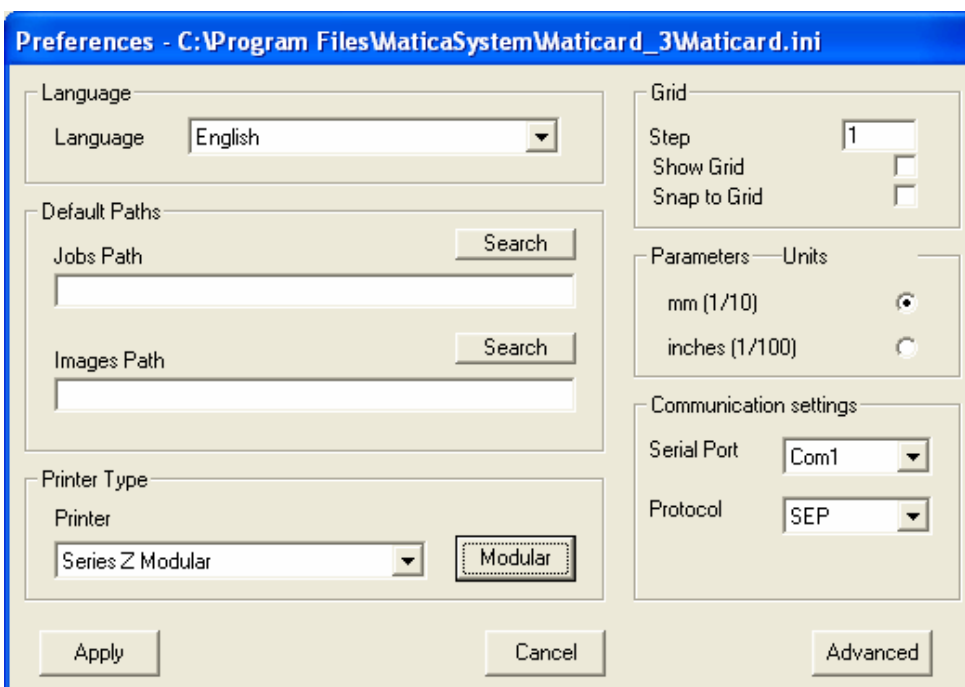
On the PC desktop, double click the MatiCard icon.

In the MatiCard Graphic window click **Preferences** from the **Options** menu.



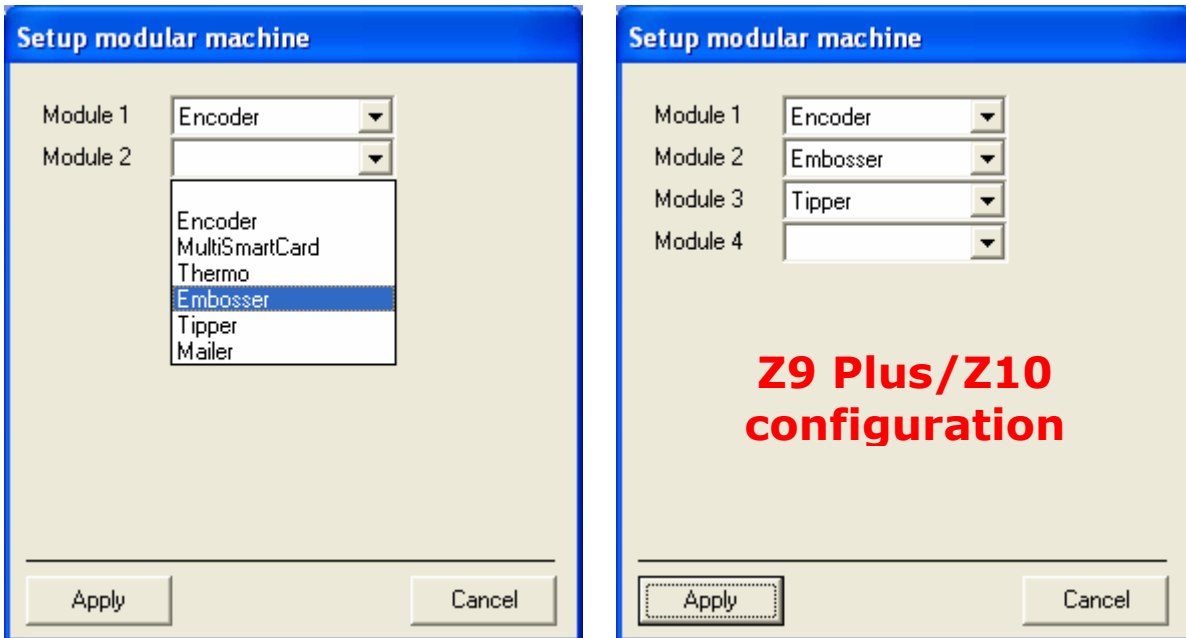
In the Preferences window, select the Series Z Modular option in the **Printer Type** box and then select the Serial Port used in the **Communication settings** box.

To perform the modules configuration click **Modular** in the Printer Type box.



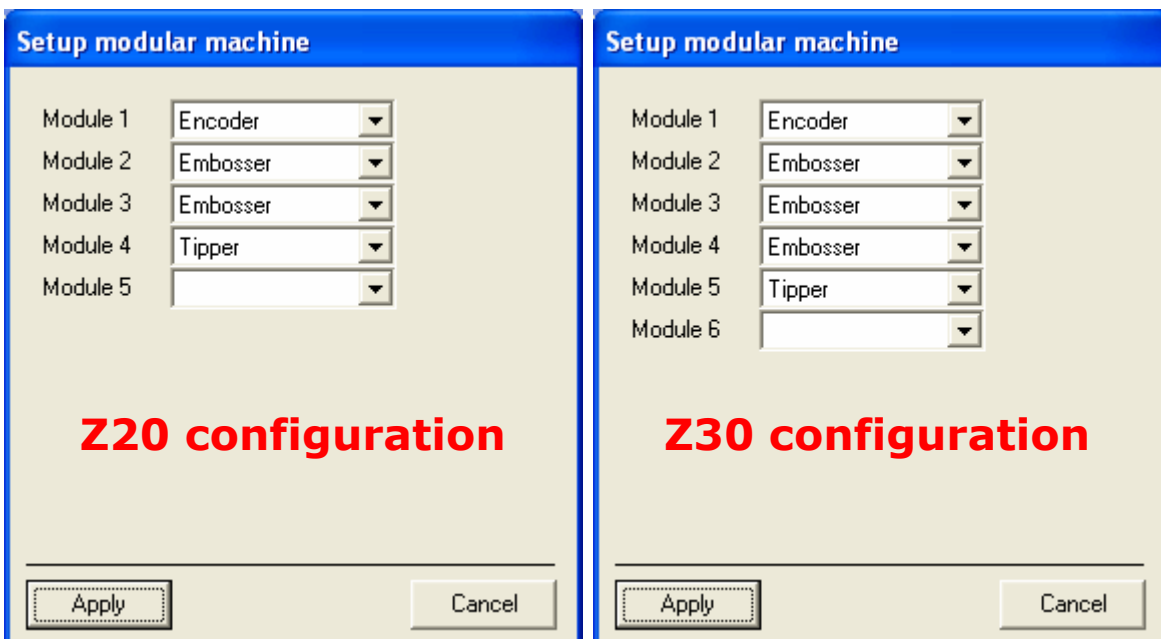
To configure the system in the **Setup modular machine** window, select the first module (Module 1) from the related combo box list, then select the next module (Module 2) in the following combo box list, and so on until the configuration is completed.

For Z9 Plus and Z10 configuration, select **Encoder** for the Module 1, **Emboss** for the Module 2 and **Tipper** for the Module 3.



For Z20 configuration, select **Encoder** for the Module 1, **Emboss** for the Module 2 and 3, and **Tipper** for the Module 4.

For Z30 configuration, select **Encoder** for the Module 1, **Emboss** for the Module 2, 3, and 4, and **Tipper** for the Module 5.



To save the system configuration click **Apply**.

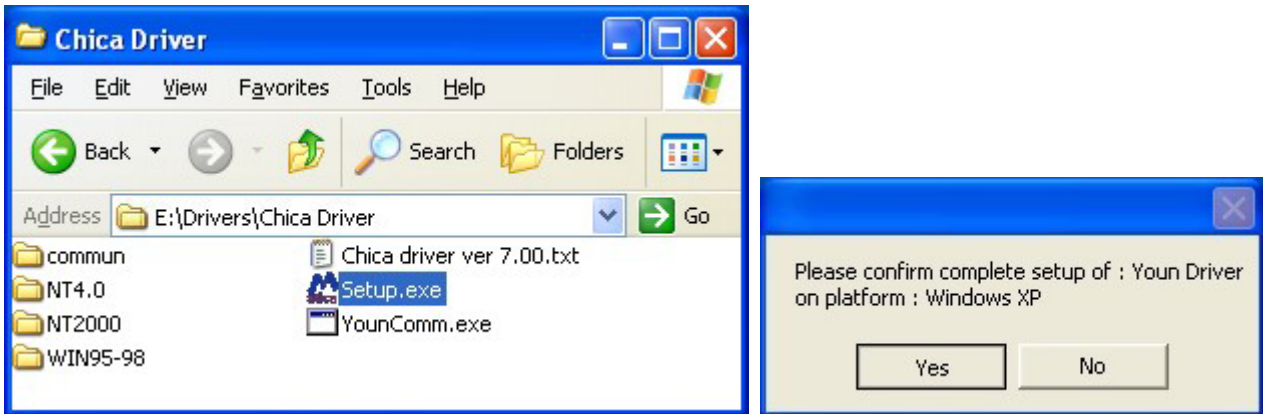
To save the system settings in the Preferences window click **Apply**.

Paragraph 3 – ZT10 and Z20T installation

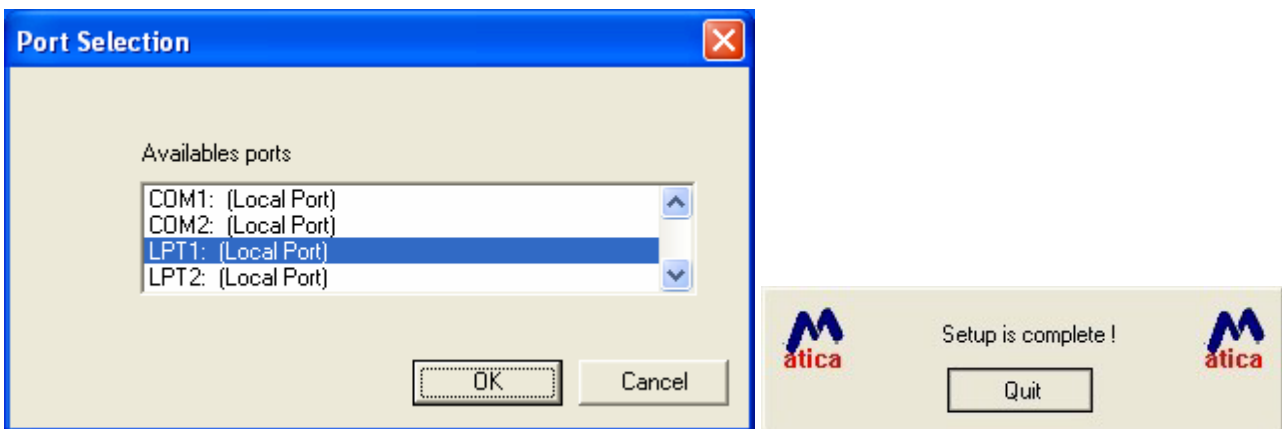
Install the driver to get the Thermographic Printer communicate through the USB channel.

Browse the Matica User CD and go to the Drivers\Chica Driver folder.

Run the file **Setup.exe**; in the confirm window, click **Yes**.

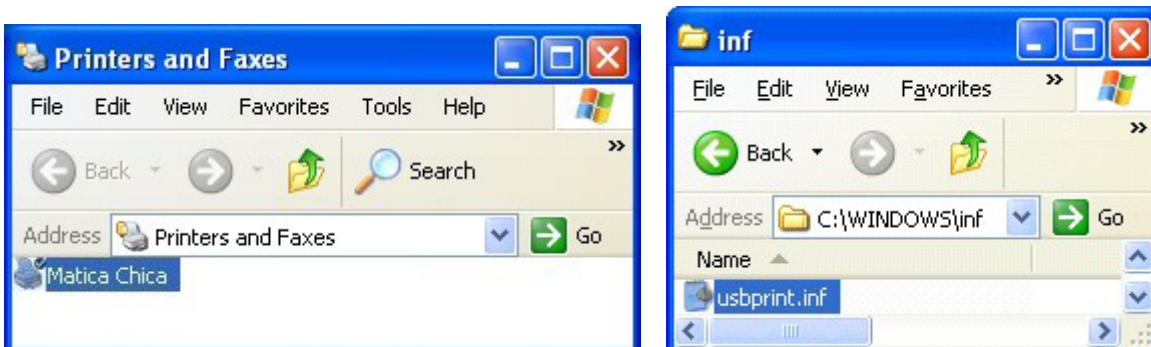


Select a port to connect the Thermographic Printer and click **OK** (we suggest to select always the LPT1 port and never the COM ports); the setup will copy the driver file in to the PC. When the setup is complete, click **Quit**.



Go to the Printers folder and check if the **Matica Chica** printer is present.

Go to C:\Windows\inf folder and check if **usbprint.inf** file is present, because some printers during the installation renames this file usbprint.in. If it's so, change the name adding the final letter " f " or the Matica Printer won't work.



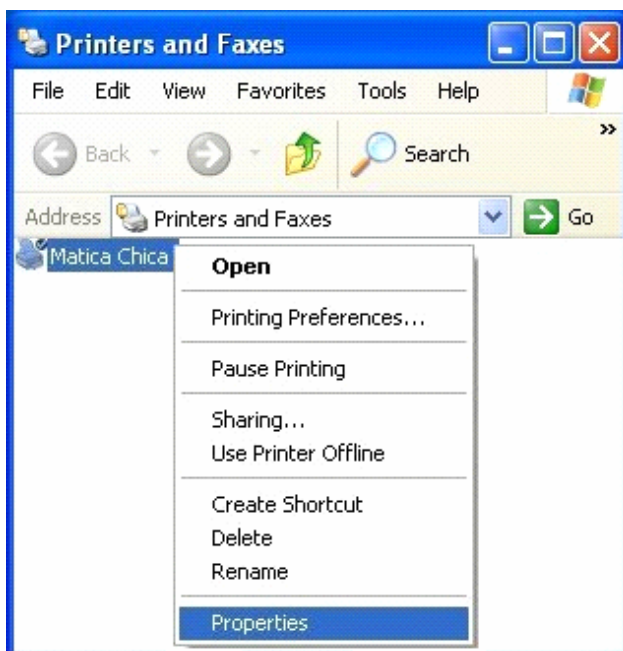
Connect the ZT10 - Z20T to the serial port and the power supply, then switch on the system. After the reset, connect the parallel or USB cable (it's strongly recommend to connect the Thermographic Printer to a USB port); if you choose an USB connection, the PC will automatically detect the new hardware.

Note: it's recommended to label the USB port connected, to use the same port in case of ZT10 - Z20T future installation.

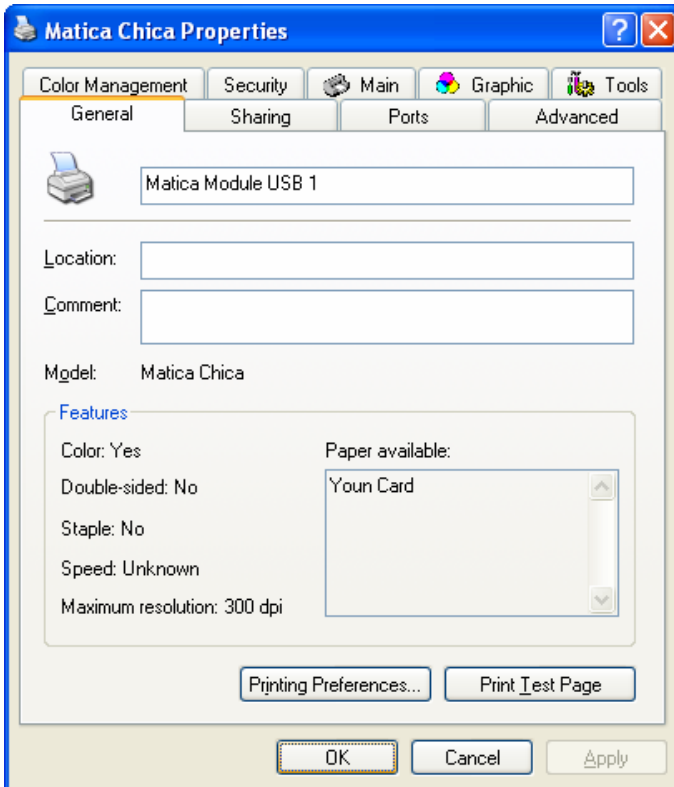
In the wizard window choose the Recommended installation and click **Next**. When the PC has completed the installation, click **Finish**.



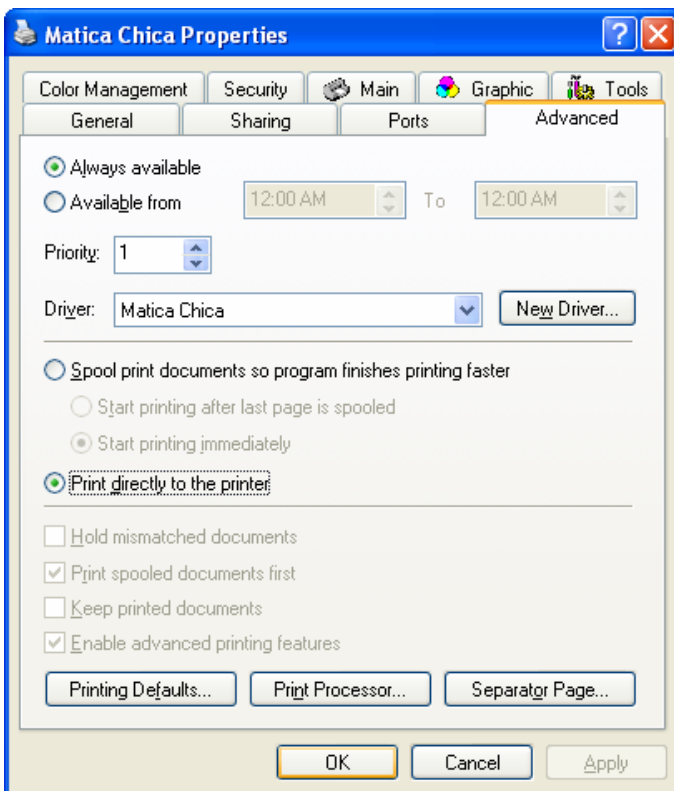
Go again to the Printers folder and right click the **Matica Chica** printer. Select the **Properties** option.



In the Matica Chica Properties window, select the **General** folder. Change the driver name from Matica Chica to **Matica Module USB 1**.



Select the **Advanced** folder, click **Print directly to the printer** and then **OK**.



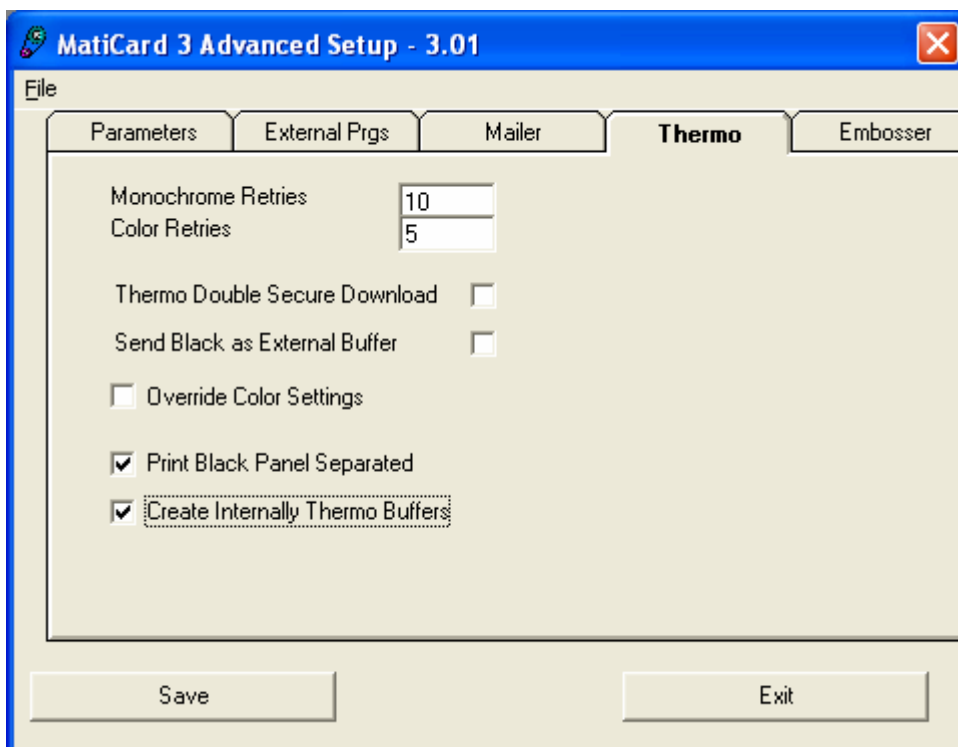
Note: Main, Graphic and Tools folder settings aren't recognized by the system.

Paragraph 4 – MatiCard configuration for ZT10 - Z20T

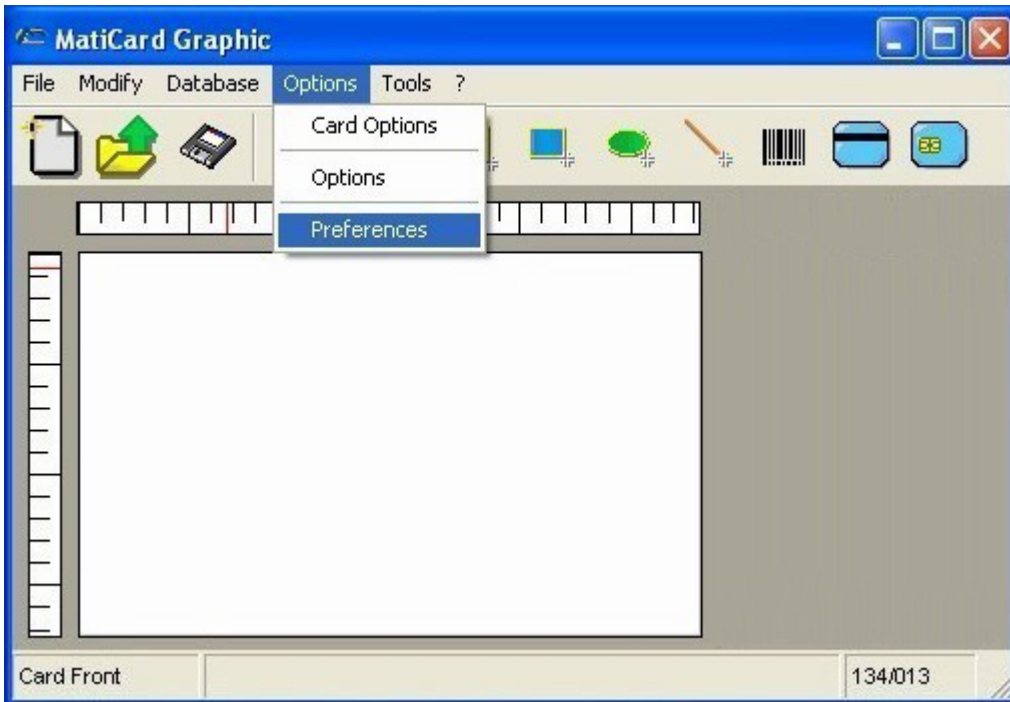
On the PC desktop click **Start**, then select **All Programs** and **MaticaSystem**. In the **Maticard_3** group of programs select **Maticard Advanced Setup**.



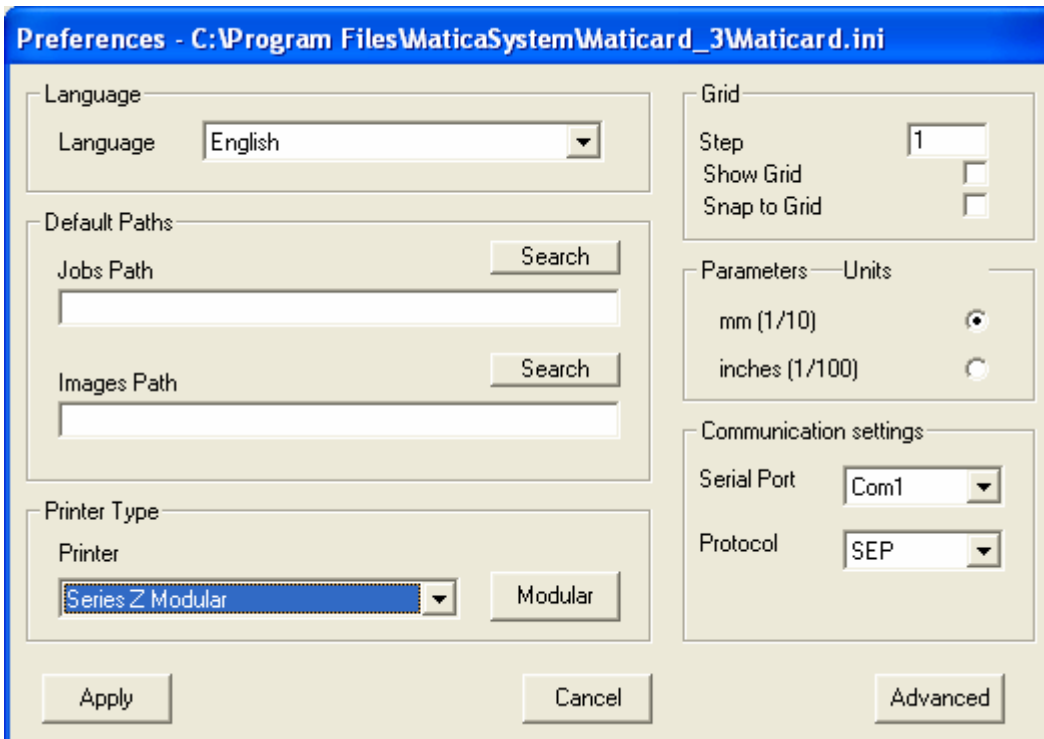
In the MatiCard 3 Advanced Setup window select the **Thermo** folder. Check mark the **Create Internally Thermo Buffers** option. In this way MatiCard can manage directly the system printer using the DCL (Direct Command Language) modality, without needing any driver; in fact the Matica Module USB driver, installed before, has the only purpose to get the Thermographic Printer communicate through the USB channel. To enable the settings click **Save**.



On the PC desktop, double click the Maticard icon.
In the Maticard Graphic window click **Preferences** from the **Options** menu.

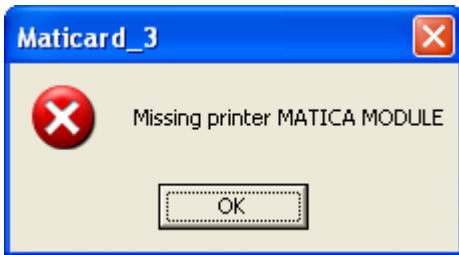


In the Preferences window, select the Series Z Modular option in the **Printer Type** box and then select the Serial Port used in the **Communication settings** box.

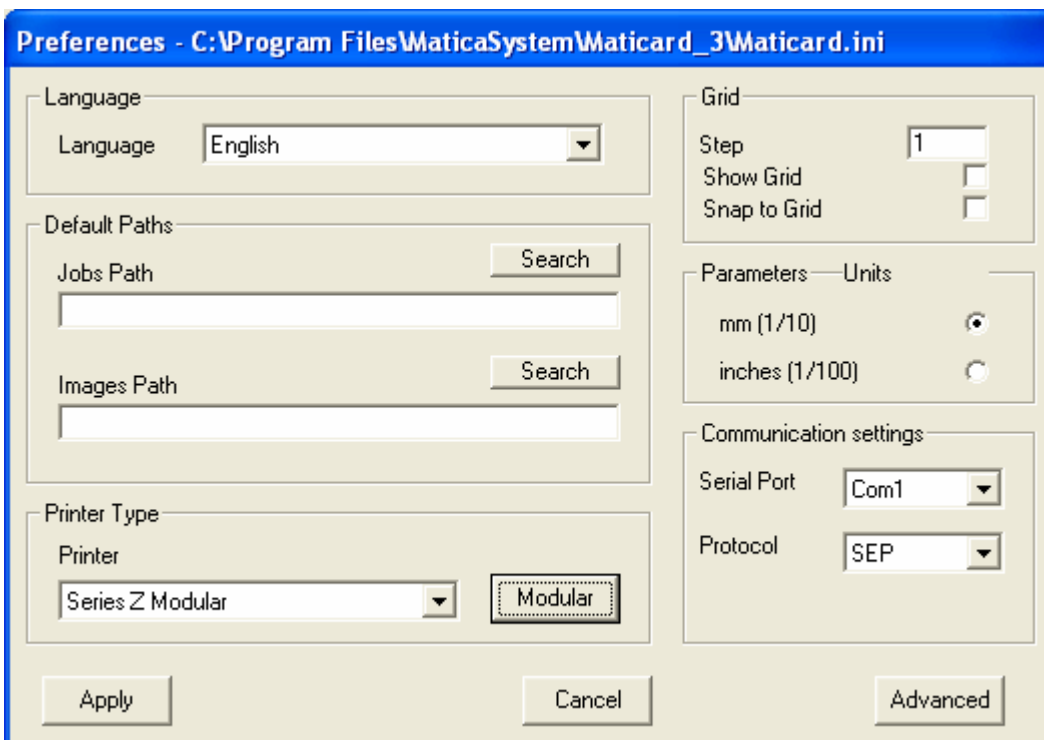


When you select the Series Z Modular printer option in the Printer Type box and appears a Maticard error window with the message **Missing printer MATICA MODULE**, it means that the **Create Internally Thermo Buffers** option in the Thermo folder of the Maticard 3 Advanced Setup window hasn't been checked.

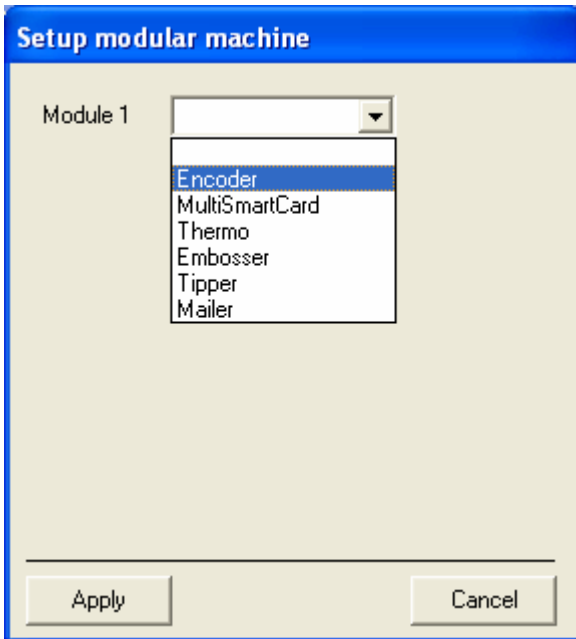
In this case you have to repeat the procedure from the beginning of this paragraph.



In order to perform the ZT10 or Z20T modules configuration click **Modular** in the Printer Type box.



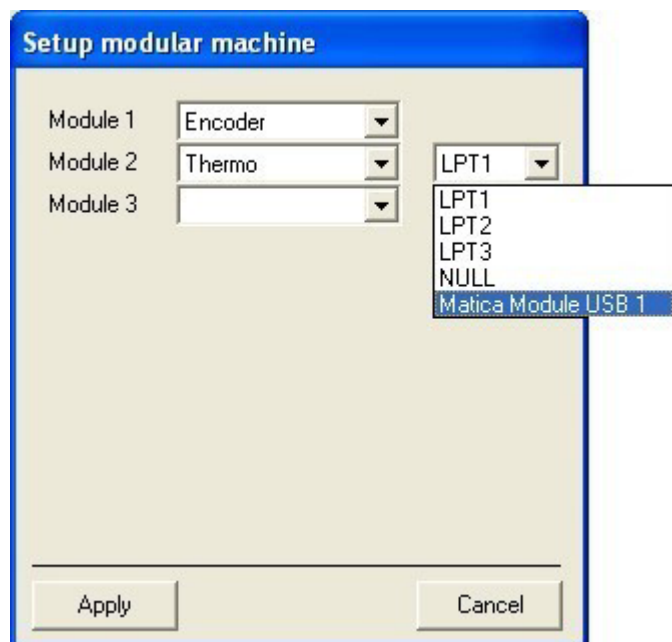
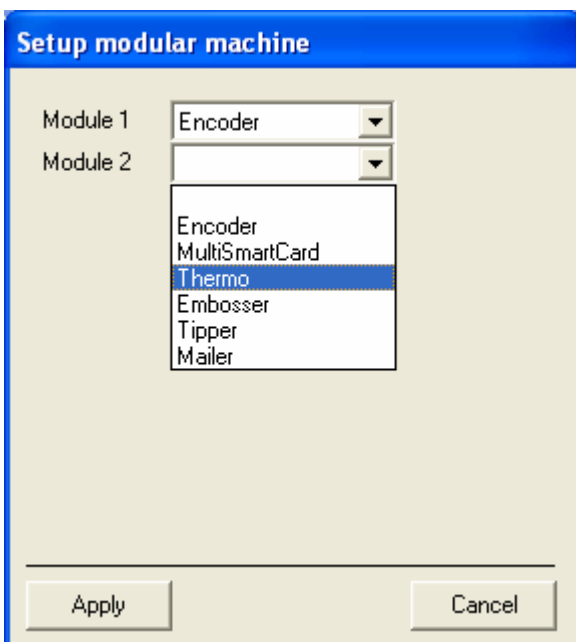
For the ZT10 configuration, select the **Encoder** option for the Module 1 in the Setup modular machine window.



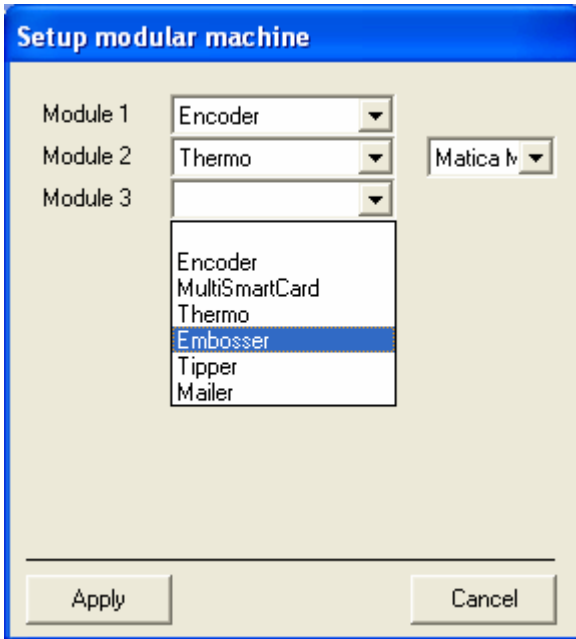
Select the **Thermo** option for the Module 2.

Select the **Matica Module USB 1** option beside the Module 2 Thermo item.

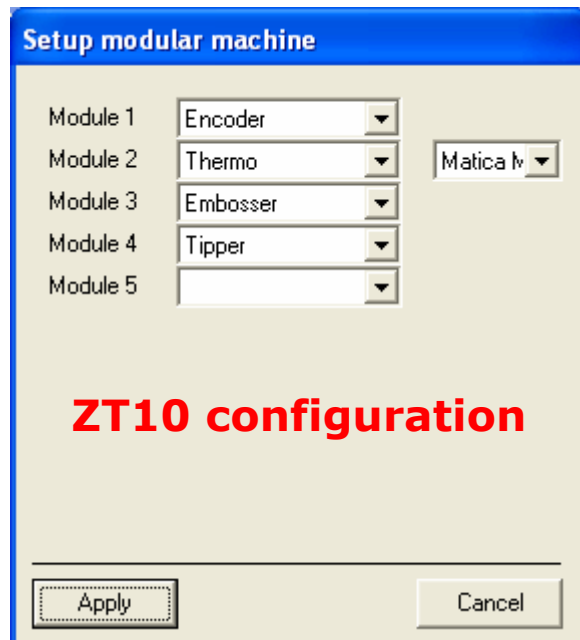
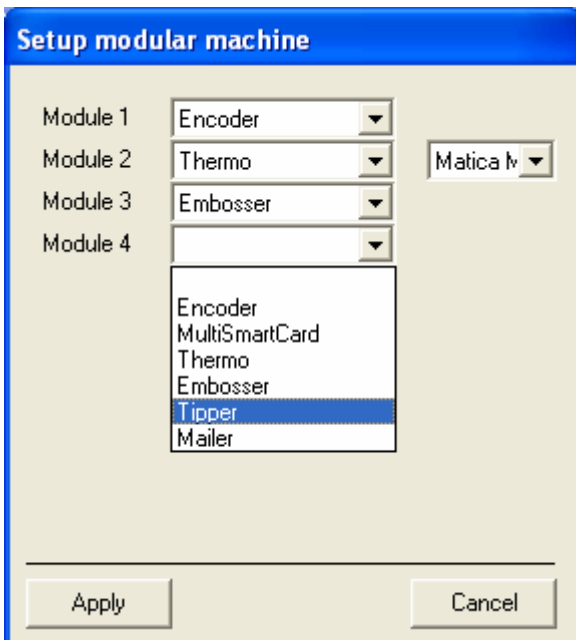
Note: the option must show exactly that specific name or the printer will not work; if the name is wrong, go to the printer driver Properties window, select the General folder and change the driver name in Matica Module USB 1.



Select the **Embosser** option for the Module 3.

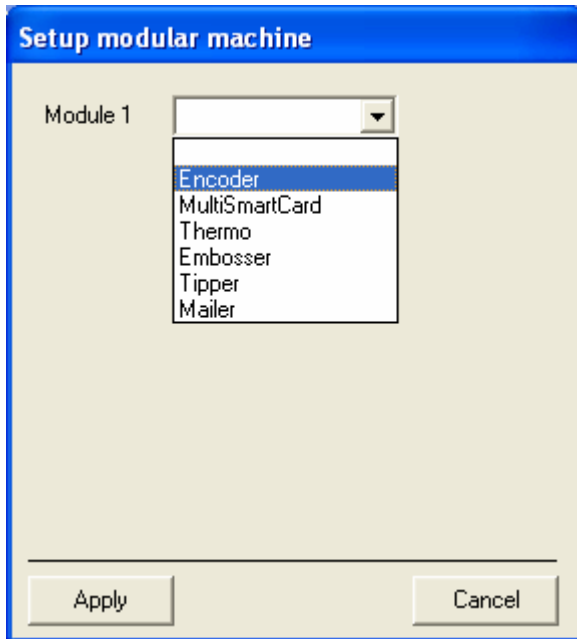


Select the **Tipper** option for the Module 4.
To save the configuration click **Apply**.



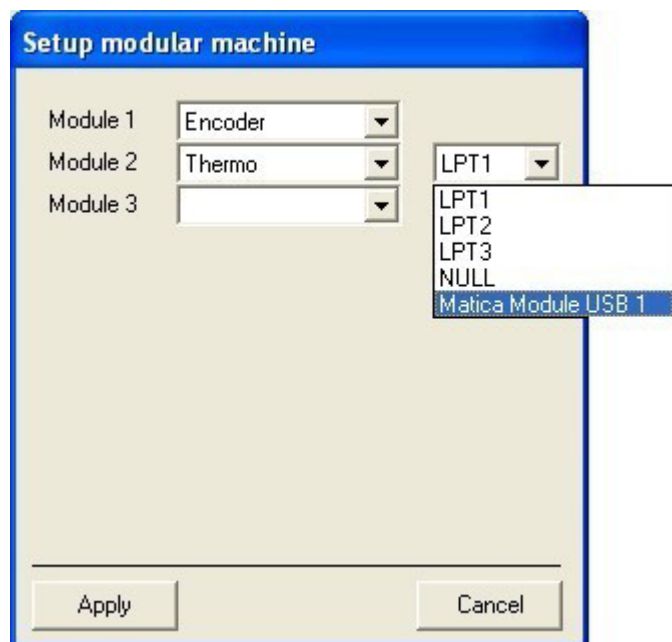
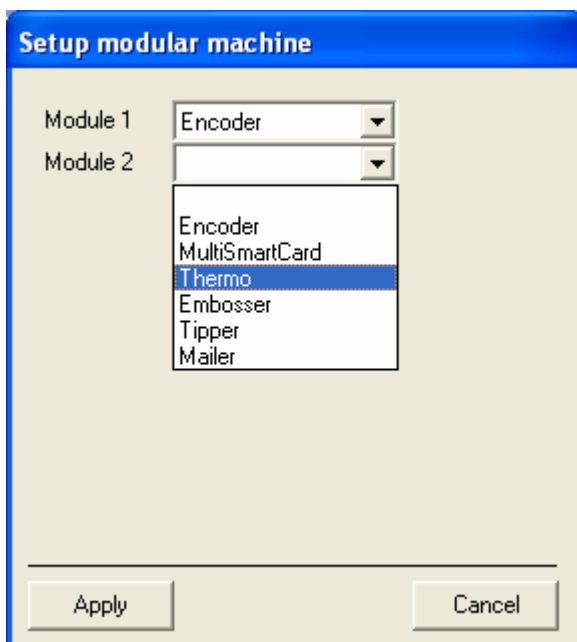
In the Preferences window, to save the settings click **Apply**.

For the Z20T configuration, select the **Encoder** option for the Module 1 in the Setup modular machine window.

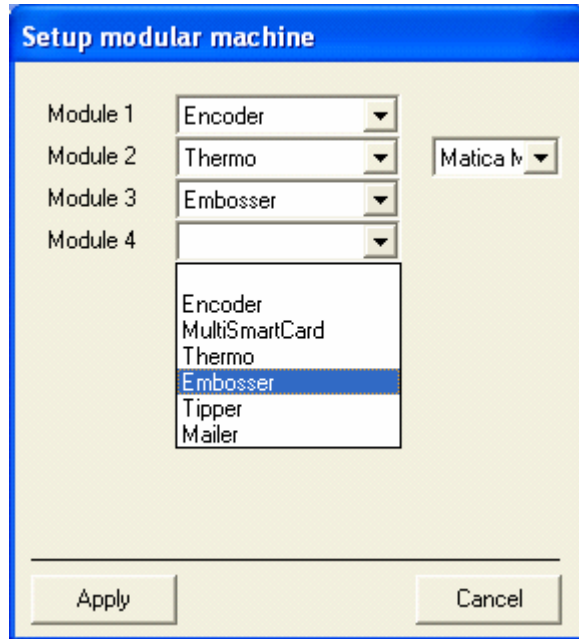
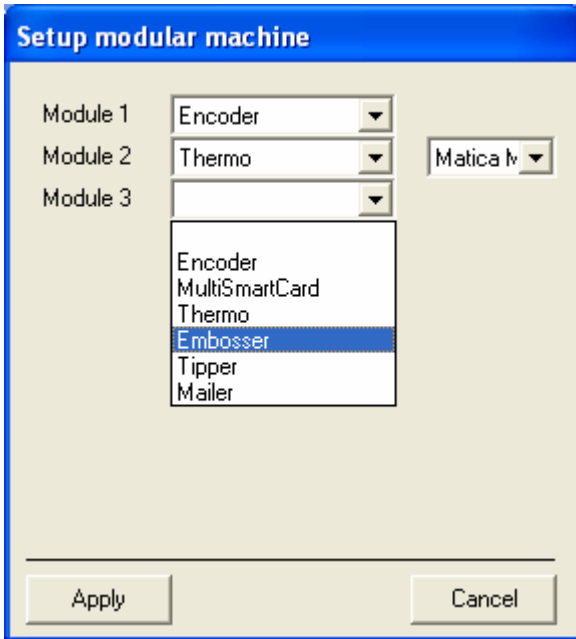


Select the **Thermo** option for the Module 2.
Select the **Matica Module USB 1** option beside the Module 2 Thermo item.

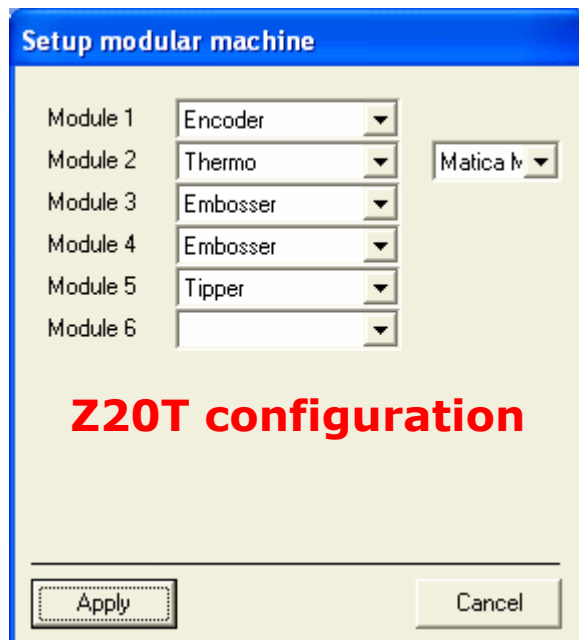
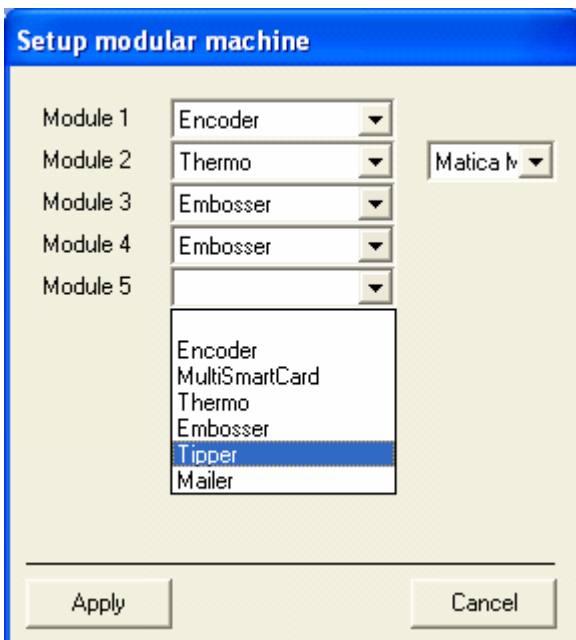
Note: the option must show exactly that specific name or the printer will not work; if the name is wrong, go to the printer driver Properties window, select the General folder and change the driver name in Matica Module USB 1.



Select the **Emboss** option for the Module 3 and for the Module 4.



Select the **Tipper** option for the Module 5.
To save the configuration click **Apply**.



In the Preferences window, to save the settings click **Apply**.

Paragraph 5 – ZT20 installation

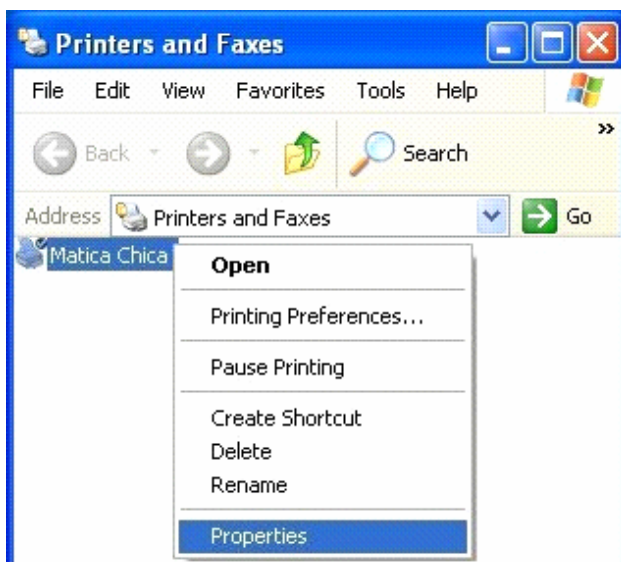
Install and check the printer driver as shown at the beginning of Paragraph 3. Connect the ZT20 to the serial port and to the power supply, then switch on the system. After the reset, connect the first parallel or USB cable (it's strongly recommend to connect the Thermographic Printer to a USB port); if you choose an USB connection, the PC will automatically detect the new hardware.

Note: it's recommended to label the first USB port and the related USB cable connected, to use the same port in case of ZT20 future installation.

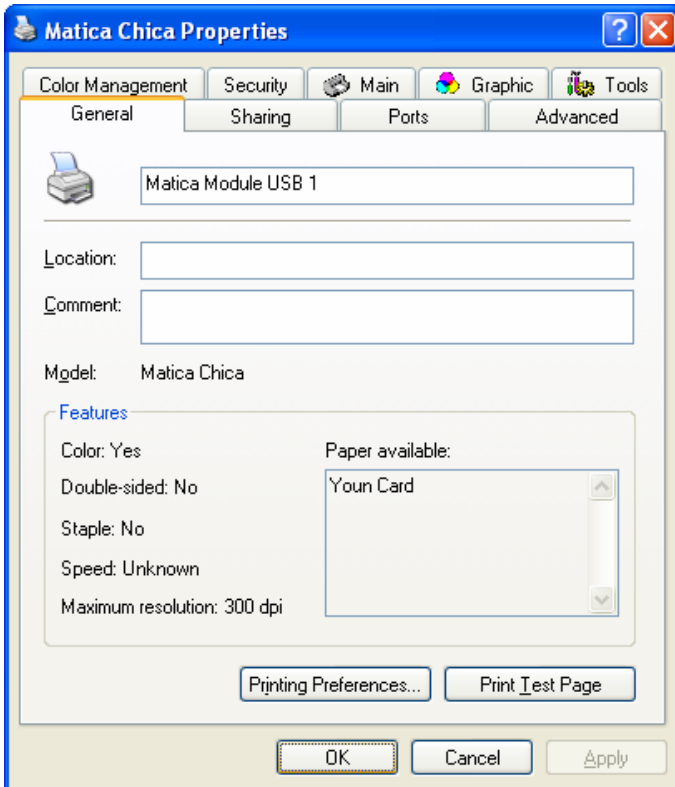
In the wizard window choose the Recommended installation and click **Next**. When the PC has completed the installation, click **Finish**.



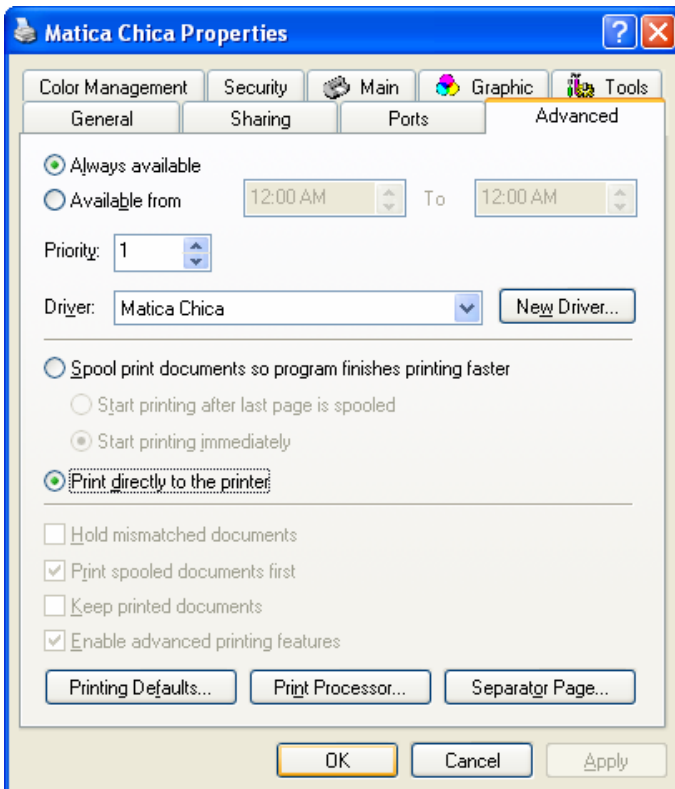
Go to the Printers folder and right click the **Matica Chica** printer. Select the **Properties** option.



In the Matica Chica Properties window, select the **General** folder. Change the driver name from Matica Chica to **Matica Module USB 1**.



Select the **Advanced** folder, click **Print directly to the printer** and then **OK**.



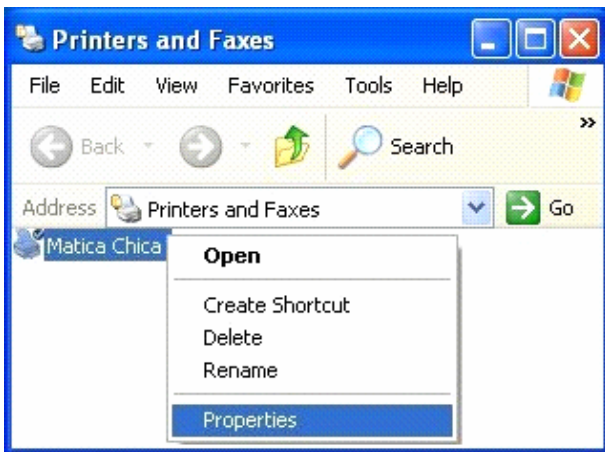
Note: Main, Graphic and Tools folder settings aren't recognized by the system.

Connect the ZT20 to the second parallel or USB cable (it's strongly recommend to connect the Thermographic Printer to a USB port); if you choose an USB connection, the PC will automatically detect the new hardware.

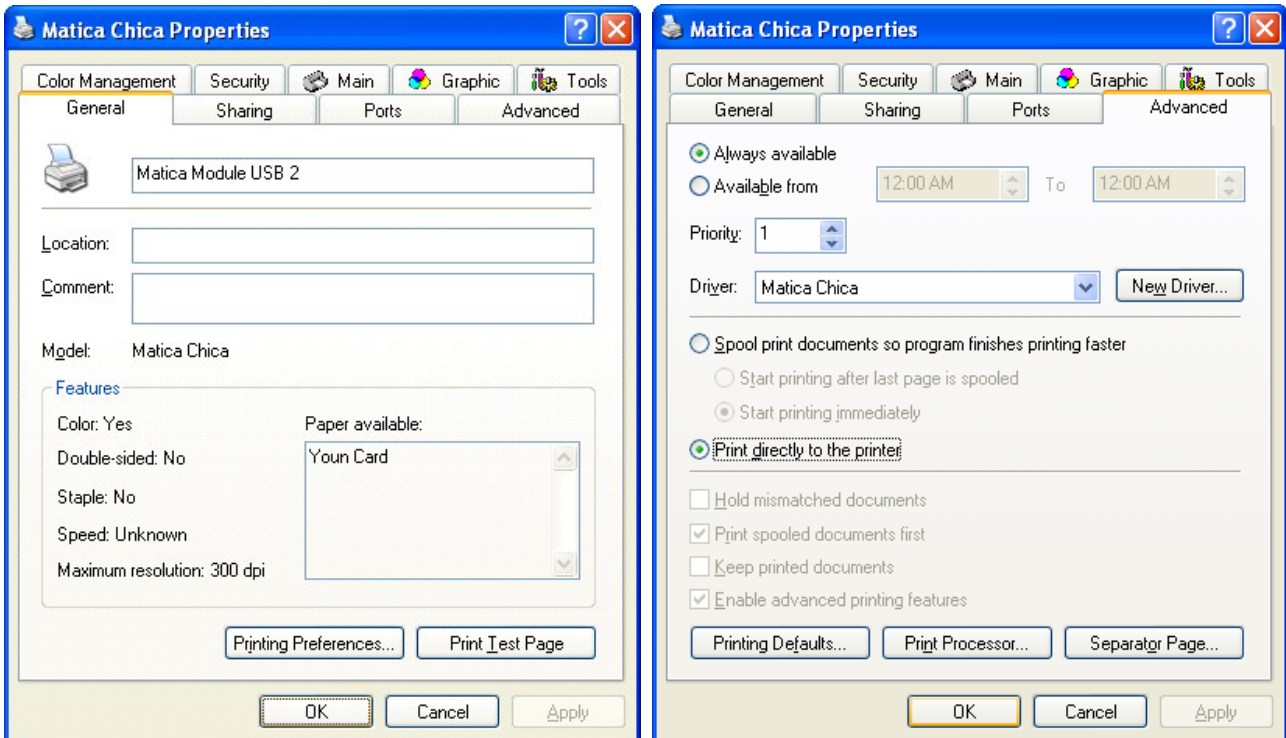
Install the new hardware as shown at the beginning of this paragraph.

Note: it's recommended to label the second USB port and the related USB cable connected; in fact if the first and the second USB port connection is inverted, the PC detects them as new hardware and starts a new installation.

Go to the Printers folder and right click the **Matica Chica** printer. Select the **Properties** option.



In the Matica Chica Properties window, select the **General** folder. Change the driver name from Matica Chica to **Matica Module USB 2**. Select the **Advanced** folder, click **Print directly to the printer** and then **OK**.



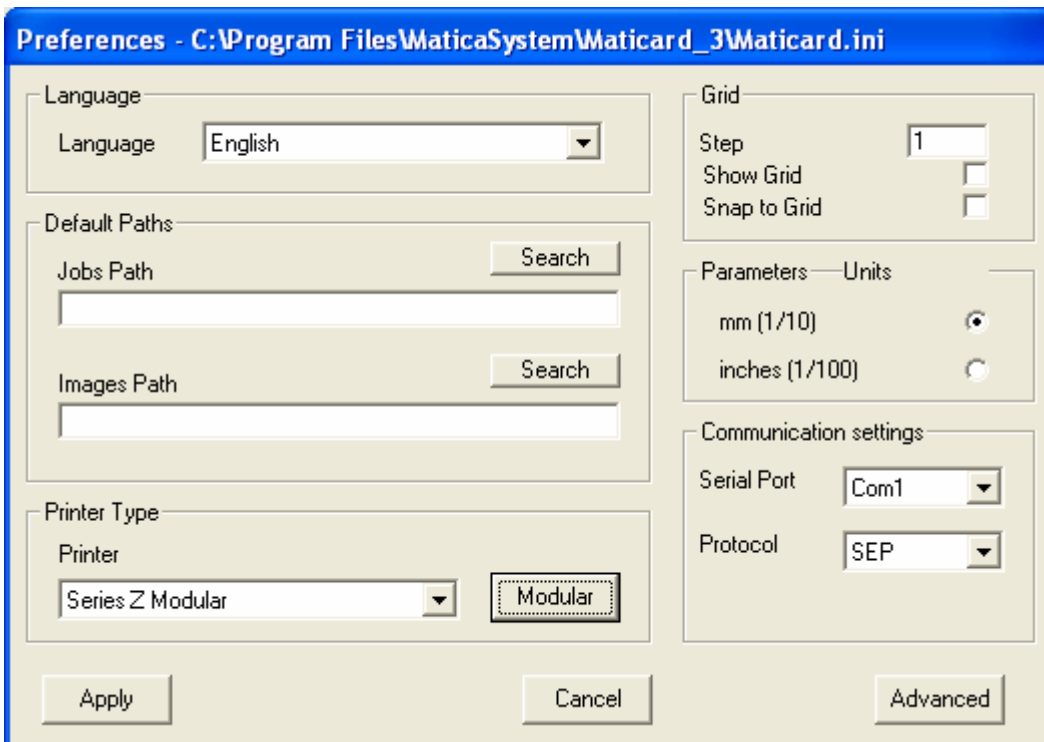
Note: Main, Graphic and Tools folder settings aren't recognized by the system.

Paragraph 6 – MatiCard configuration for ZT20

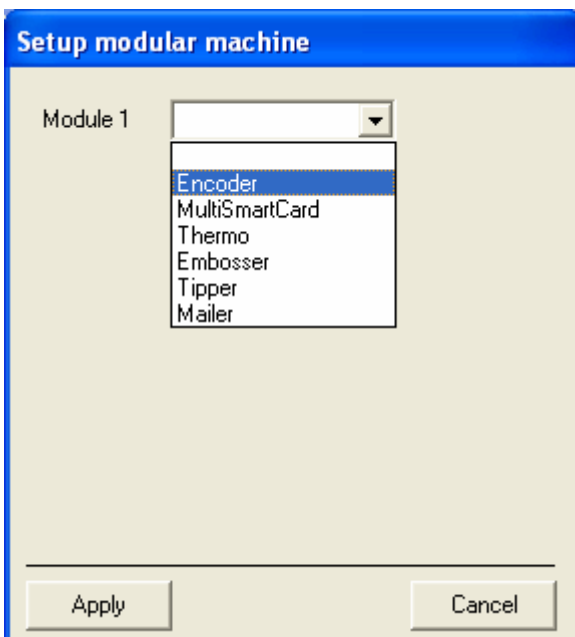
The ZT20 configuration is the same of the ZT10, described in paragraph 4; the only difference concerns the modules configuration.

Follow the ZT10 procedure about to Create Internally Thermo Buffers in the MatiCard Advanced Setup and to select Printer Type and Communication Settings in the MatiCard Preferences.

In order to perform the ZT20 modules configuration click **Modular** in the Printer Type box.



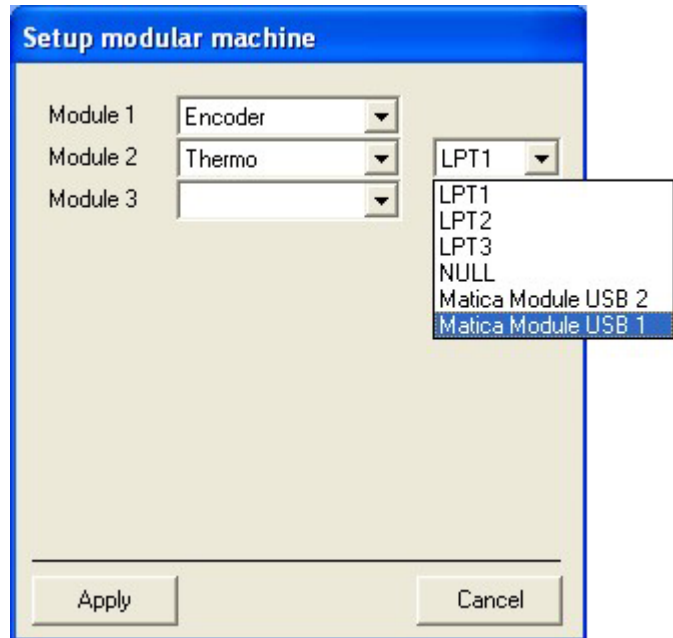
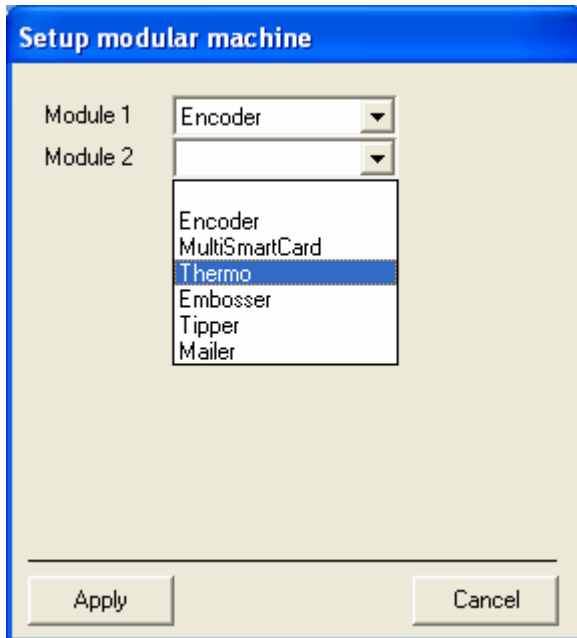
In the Setup modular window, select the **Encoder** option for the Module 1.



Select the **Thermo** option for the Module 2.

Select the **Matica Module USB 1** option beside the Module 2 Thermo item.

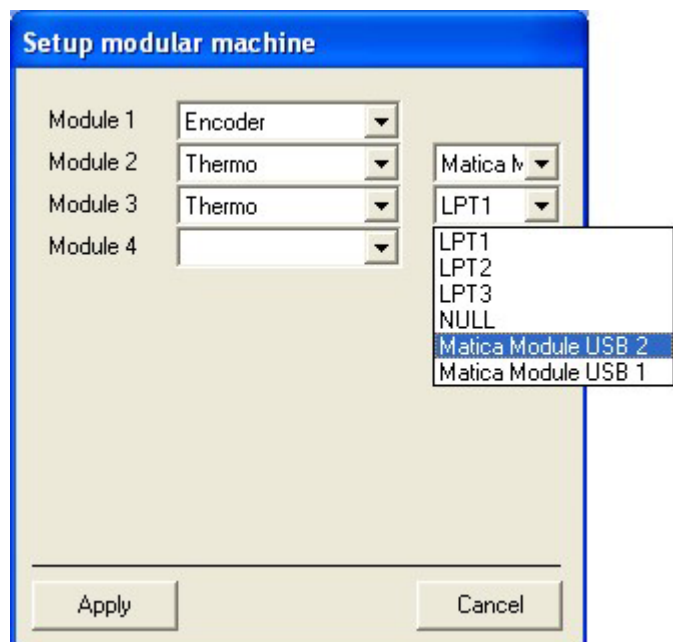
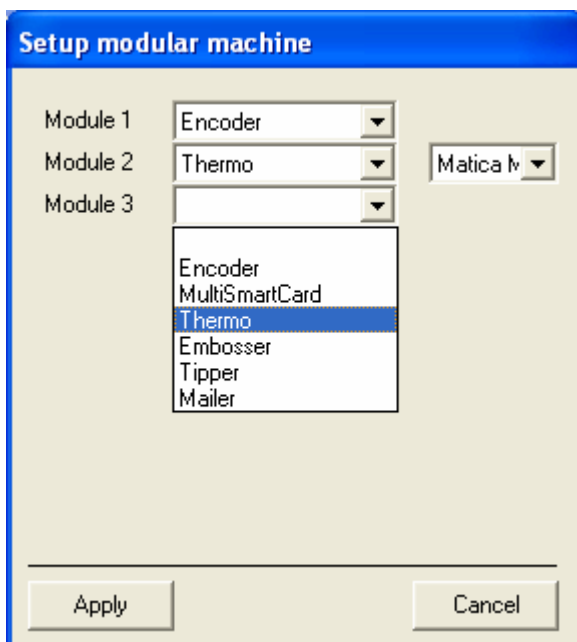
Note: the option must show exactly that specific name or the printer will not work; if the name is wrong, go to the related printer driver Properties window, select the General folder and change the driver name in Matica Module USB 1.



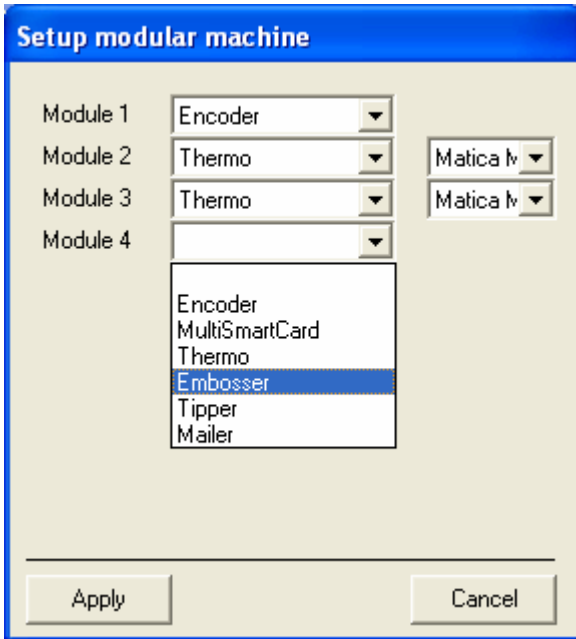
Select the **Thermo** option for the Module 3.

Select the **Matica Module USB 2** option beside the Module 3 Thermo item.

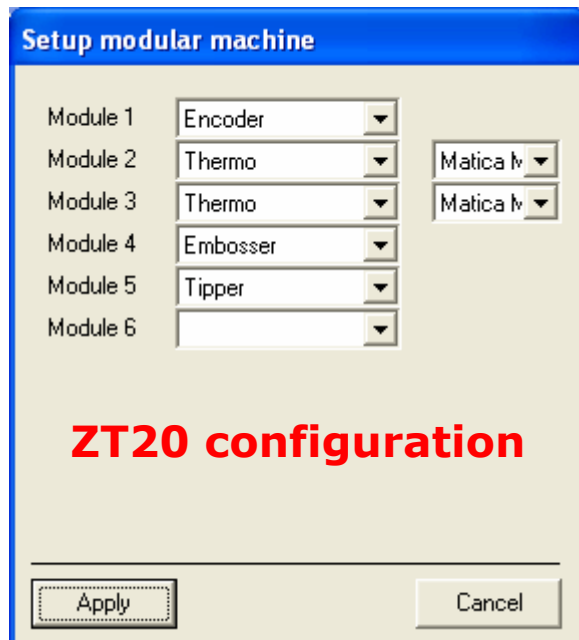
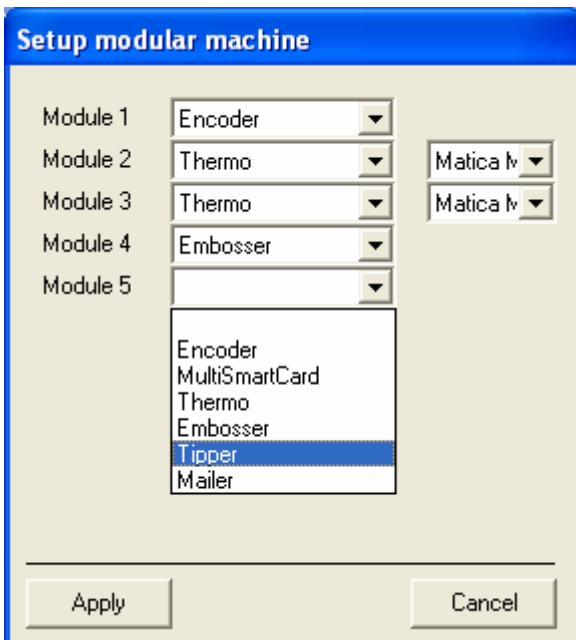
Note: the option must show exactly that specific name or the printer will not work; if the name is wrong, go to the related printer driver Properties window, select the General folder and change the driver name in Matica Module USB 2.



Select the **Embosser** option for the Module 4.



Select the **Tipper** option for the Module 5.
To save the configuration click **Apply**.



In the Preferences window, to save the settings click **Apply**.