

# METAL PLATE EMBOSSING SYSTEMS



03220 - 03360  
04000 - 04450



**INSTALL GUIDE**

Revision 2.02



**Important:** the technical information contained in this manual is property of MATICA System S.r.l. and is secured by copyright. The terms of the license define and specify permitted uses and other limitations.

Reproduction of any part of this manual, in any form, is forbidden without the explicit written permission of MATICA System S.r.l.

Technical information contained in the present manual is subject to change without notice. If not otherwise specified, any reference to companies, names, dates and addresses is purely incidental and is only intended to illustrate the use of the MATICA System S.r.l. product.

Every care has been taken in the collection and verification of the documentation inserted in this manual; nevertheless MATICA System S.r.l. cannot assume any responsibility deriving from its use.

Copyright © 2006 **MATICA System S.r.l.**  
All rights reserved  
Published by **MATICA System S.r.l.**

Printed in Italy  
Issue: October 2006  
Revision 2.02

**MATICA System S.r.l.**  
**via Guido Rossa, 4/6**  
**20037 – Paderno Dugnano**  
**MILAN - ITALY**  
**Phone +39.02.92272501**  
**Fax +39.02.92272540**

***E-mail: [info@maticasystem.it](mailto:info@maticasystem.it)***  
***Web: <http://www.maticasystem.it>***

## ***Table of contents***

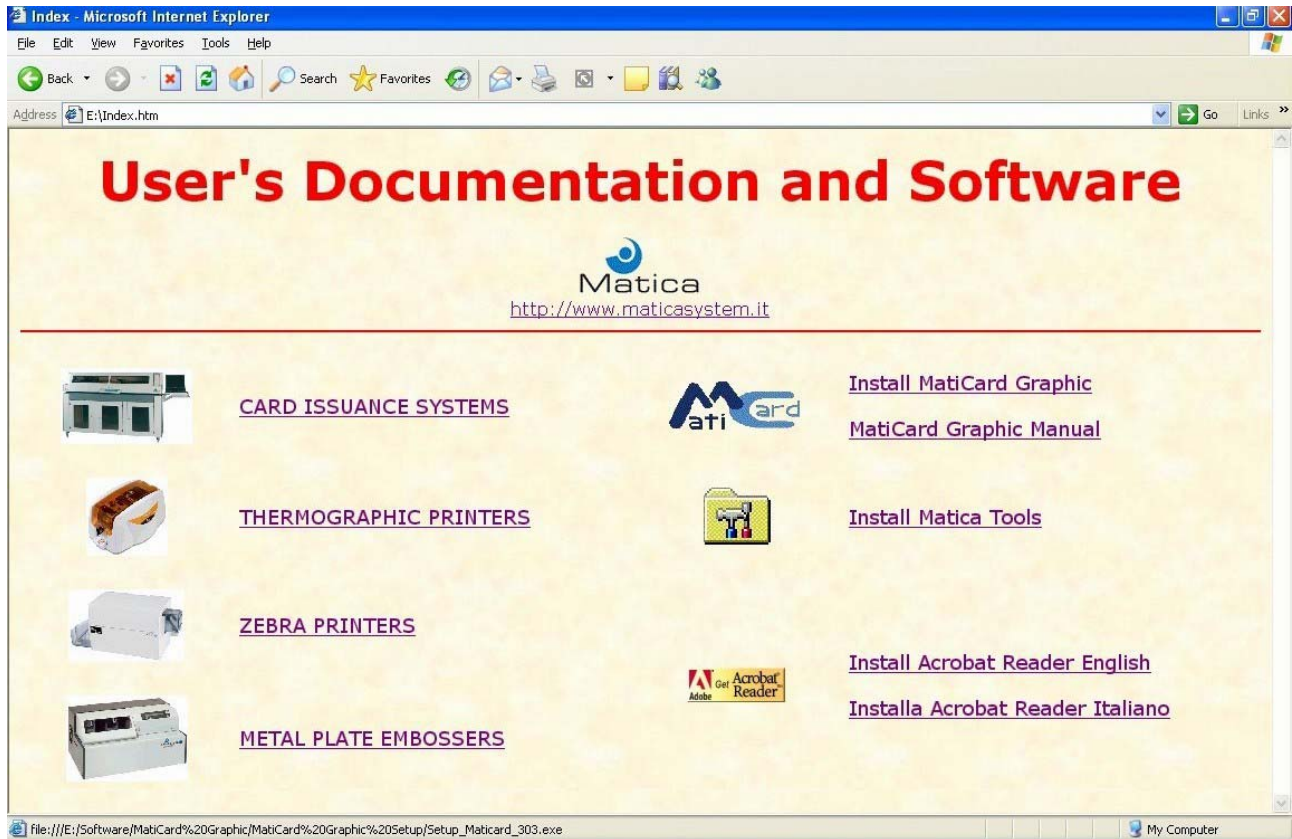
**Paragraph 1 – MatiCard installation ..... 4**

**Paragraph 2 – MatiCard configuration for C320 ..... 7**

**Paragraph 3 – MatiCard configuration for C360/C400/C450 ... 8**

### Paragraph 1 – MatiCard installation

Before installing Metal Plate Embossers you must install the MatiCard software. Go to the Matica User CD start page and click **Install MatiCard Graphic**.

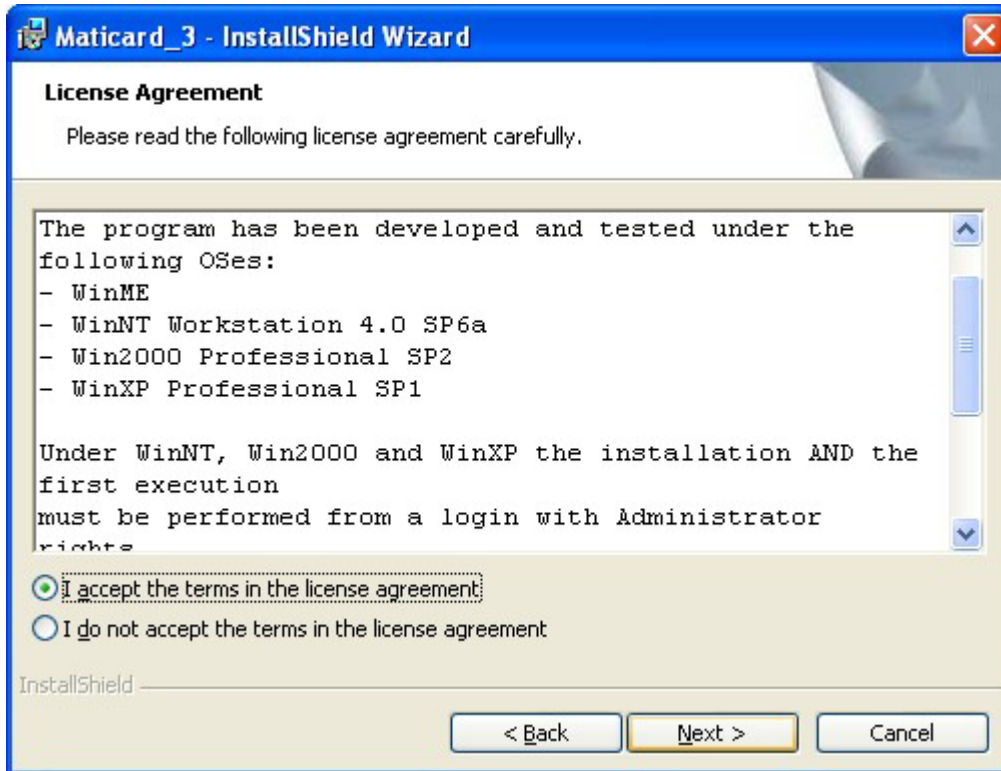


In the MatiCard InstallShield Wizard window, click **Next**.

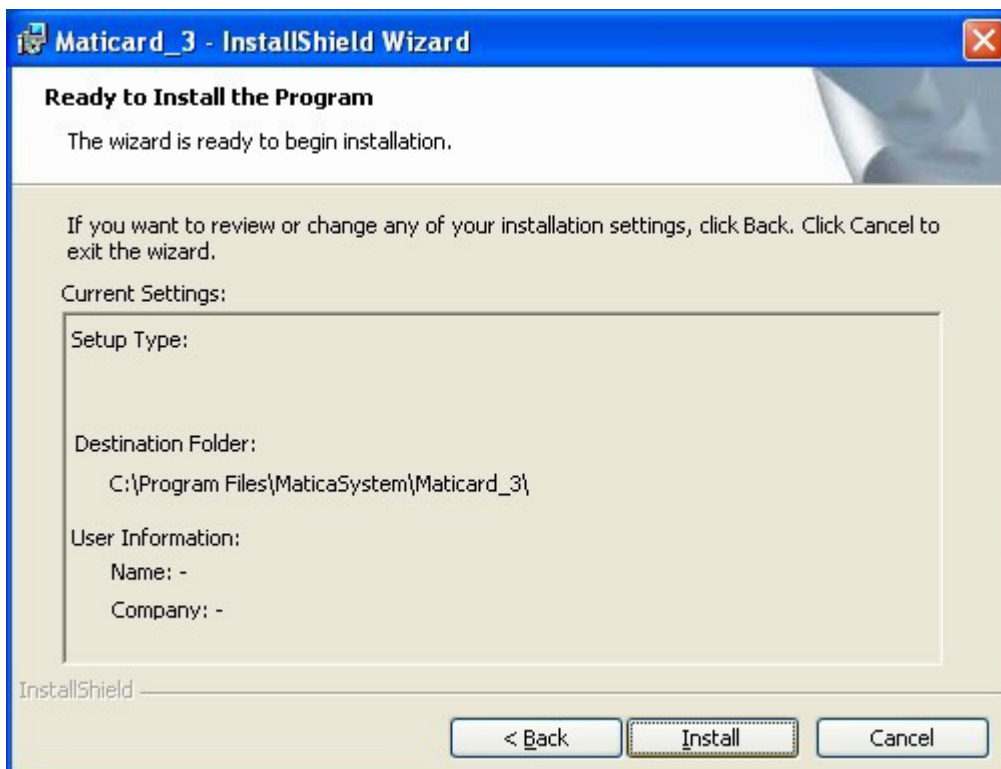


In the following wizard windows confirm the installation, accept the license terms and choose the installation folder, always clicking **Next**.

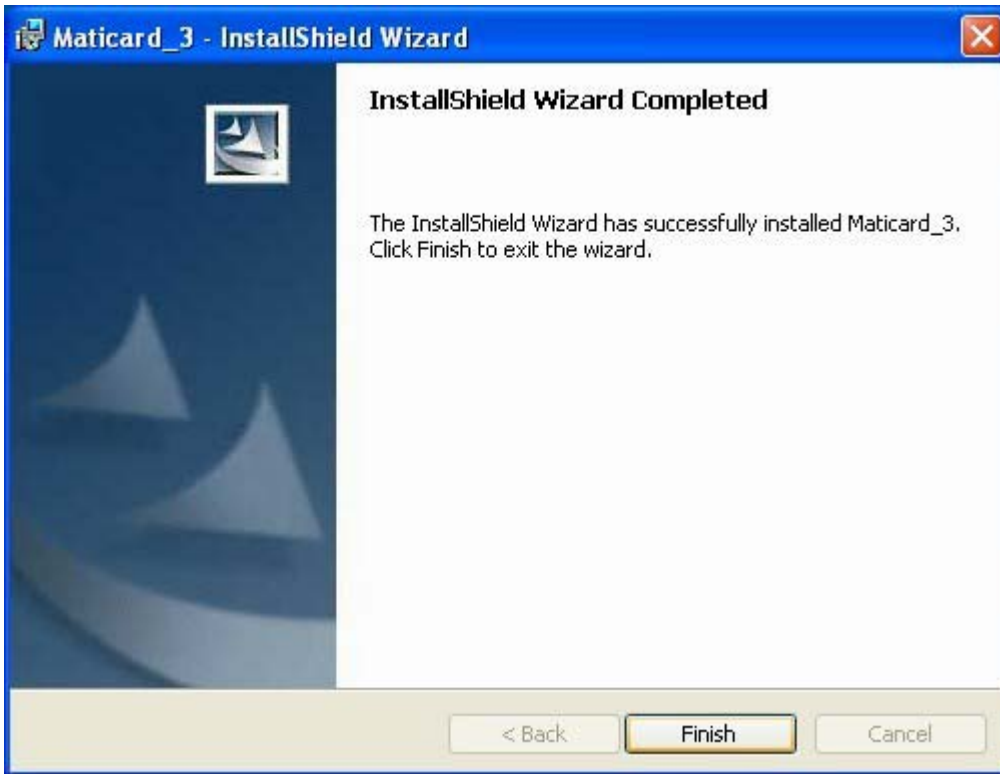
**Note:** in the license terms window are specified the operative systems required by the MatiCard software.



In the following wizard window click **Install** to start the installation.



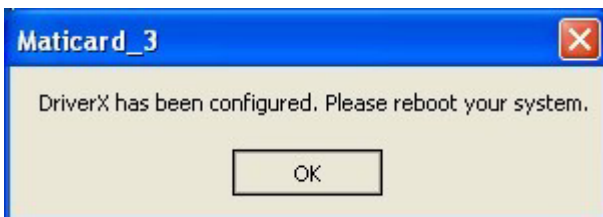
When the Pc has completed the installation, click **Finish**.



On the PC desktop, double click the MatiCard icon.



In the MatiCard reboot warning window, click **OK**.



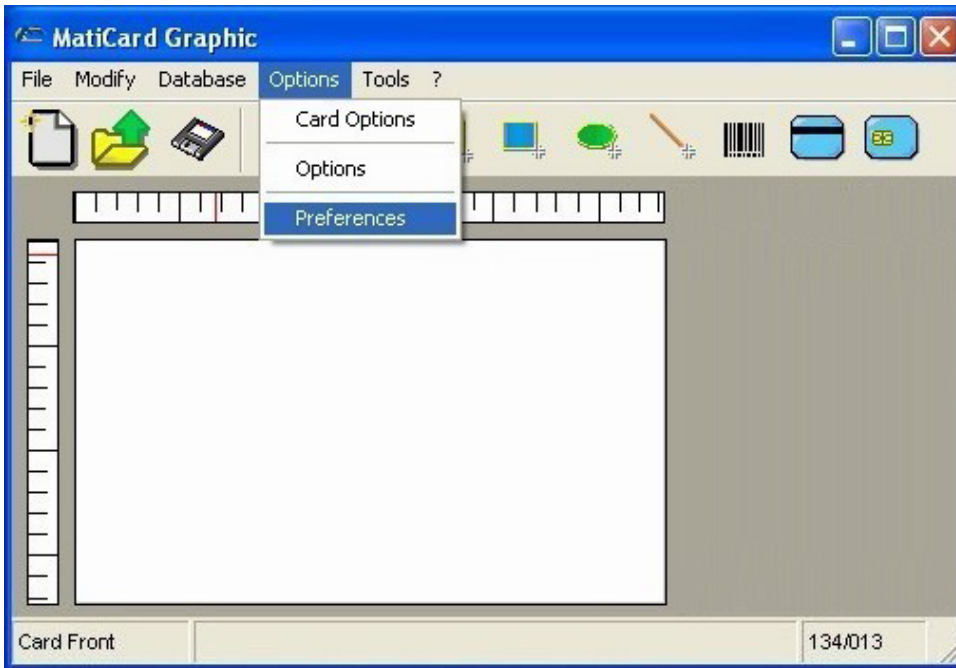
Restart the PC.

## Paragraph 2 – MatiCard configuration for C320

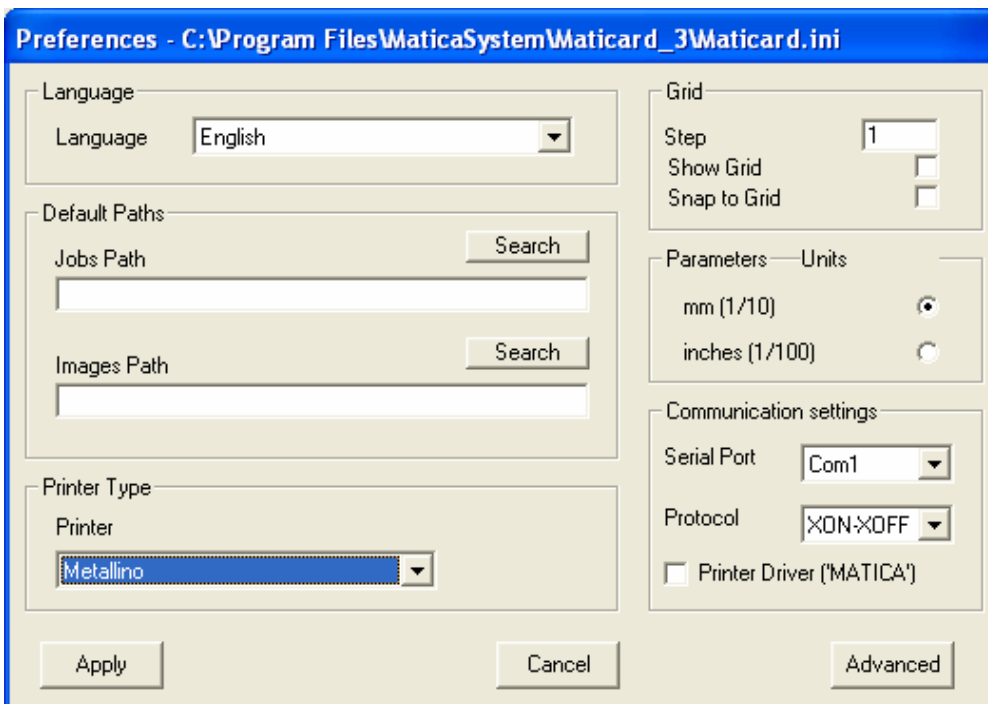
To install the C320 connect the serial cable and the power supply, then switch on the system.

On the PC desktop, double click the MatiCard icon.

In the MatiCard Graphic window click **Preferences** from the **Options** menu.



In the Preferences window, select the Metallino option in the **Printer Type** box and then select the Serial Port used in the **Communication settings** box.



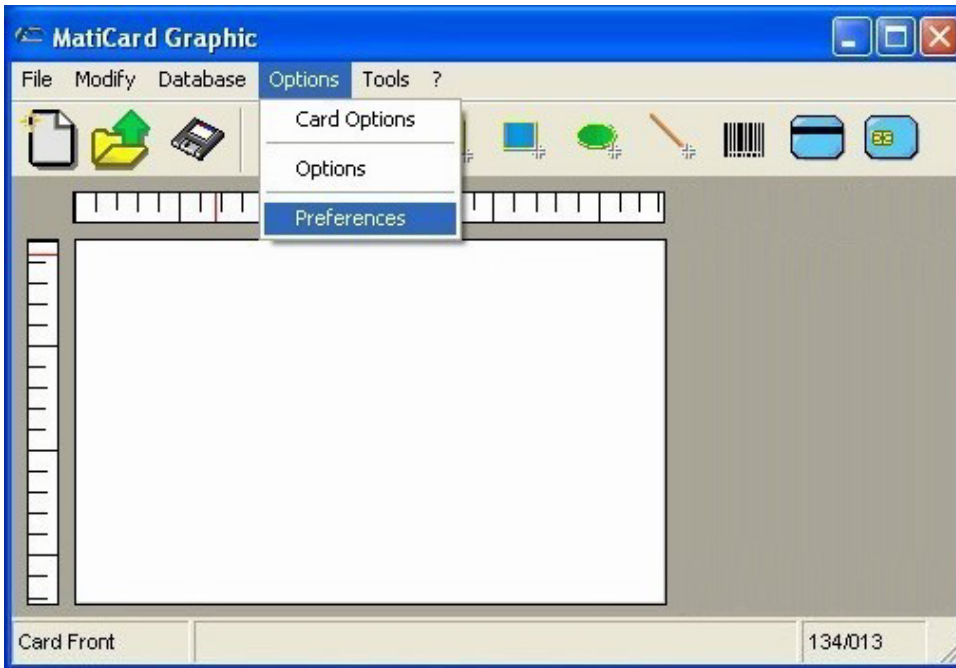
In the Preferences window, to save the settings click **Apply**.

### **Paragraph 3 – MatiCard configuration for C360/C400/C450**

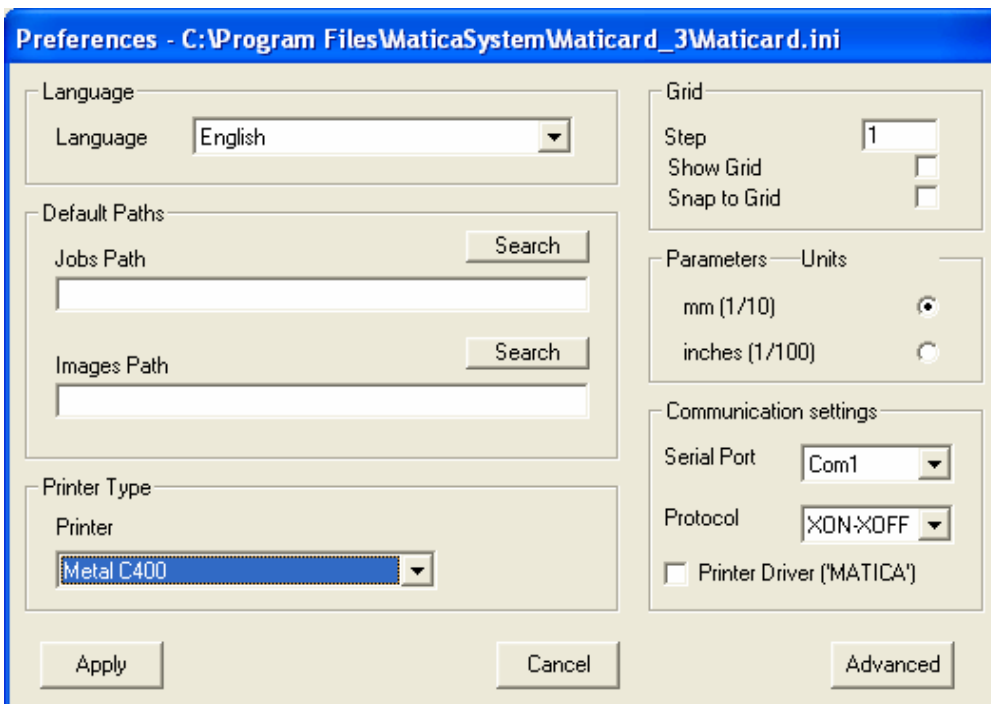
The installation for C360, C400 and C450 is the same: connect the serial cable and the power supply, then switch on the system.

On the PC desktop, double click the MatiCard icon.

In the MatiCard Graphic window click **Preferences** from the **Options** menu.



In the Preferences window, select the Metal C400 option in the **Printer Type** box and then select the Serial Port used in the **Communication settings** box.



In the Preferences window, to save the settings click **Apply**.